

HOW TO DO A BOX BOTTOM ON A BAG

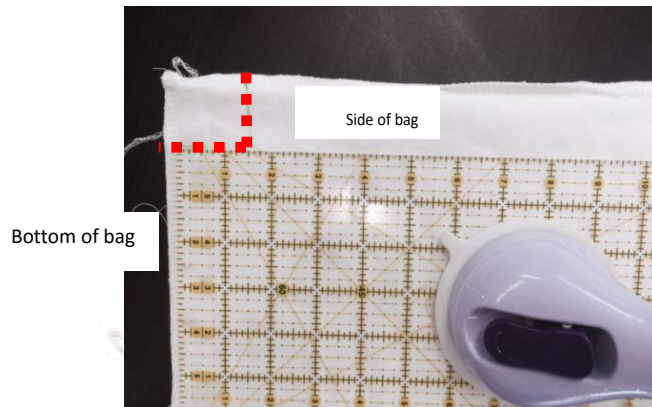
- With right sides of fabric together sew bottom and sides of bag using either a serger or sewing machine.



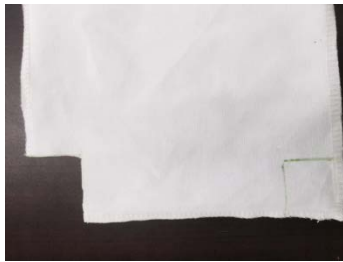
- Using an iron, press seams open, either on right or wrong side of fabric



- Working with right sides together and the wrong sides out., mark a square at the bottom corner of the bag, where the side seams meet the bottom.



- Finished size of bottom will be double the length of the square side.
 - IE: If you mark the square sides 2 inches each the bottom of the bag will be 4 inches
 - If you mark the square sides 1 inch each the bottom of the bag will be 2 inches
 - The bigger the square the narrower and shorter the bag
 -
- Cut away the marked square.



- At the cut corner, separate the layers of the bag.
 - Match the side seam and the bottom seam together, as shown below.
- Make sure the two seams are matched, for best results
 - Stitch across with your sewing machine. An edge joining foot and appropriate stitch was used.
- Turn right side out and press

Copyright © 2016 by Sew On -Sew Forth

All rights reserved. No part of this publication may be reproduced, distributed, or transmitted in any form or by any means, including photocopying, recording, or other electronic or mechanical methods, without the prior written permission of Sew On-Sew Forth,



Copyright © 2016 by Sew On -Sew Forth

All rights reserved. No part of this publication may be reproduced, distributed, or transmitted in any form or by any means, including photocopying, recording, or other electronic or mechanical methods, without the prior written permission of Sew On-Sew Forth,