

Tutorial - Colorful Fruit

Scan this image with your Flip-Pal™ mobile scanner.



Original Photo

Follow the instructions, and your finished embroidered piece will look like this!



Embroidered Design

Materials Required:

- PE-DESIGN® software
- Flip-Pal™ mobile scanner
- Brother embroidery machine
- 4"x4" Brother embroidery hoop
- Medium to heavy weight Brother Stabilizer
- Brother embroidery thread

STEP 1

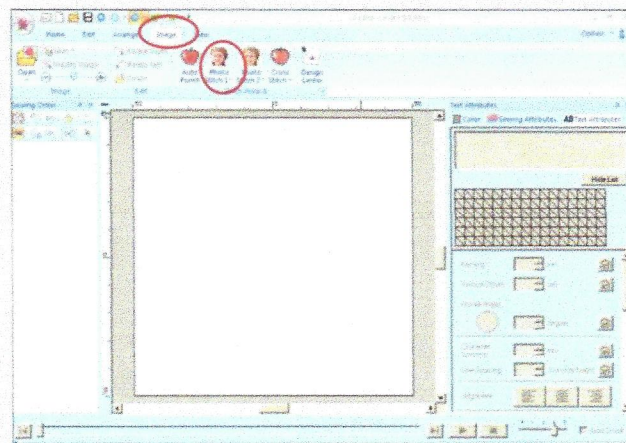
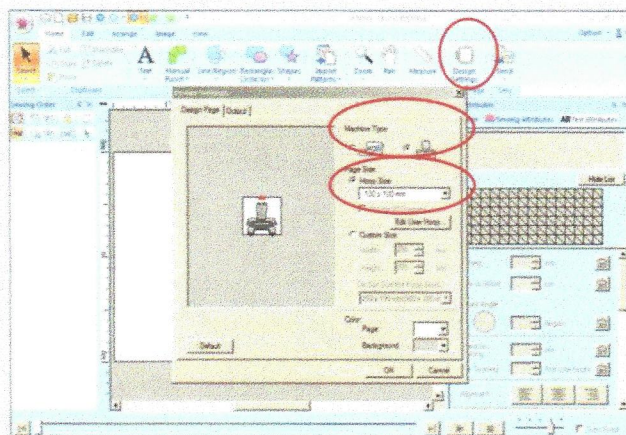
Scan your image with the Flip-Pal™ mobile scanner.

1. Insert SD card into side of the scanner.
2. Turn on the unit by sliding the gray power switch toward the back of machine.
3. Go to the LCD screen, and use the Up Arrow to scroll to the '300 and 600 dpi' section. Use the Up Arrow or Down Arrow to change the dpi to 300 dpi.
4. Remove lid: Pull up on small tabs at both ends.
5. Flip scanner over onto the 'Colorful Fruit' photo on the first page.
6. Align by looking through the viewing window.
7. Press green Scan button.
8. Turn off the machine with the gray power switch.
9. Eject the SD card.
10. Place the SD card into the included USB adapter, and insert the adapter into your PC.

STEP 2

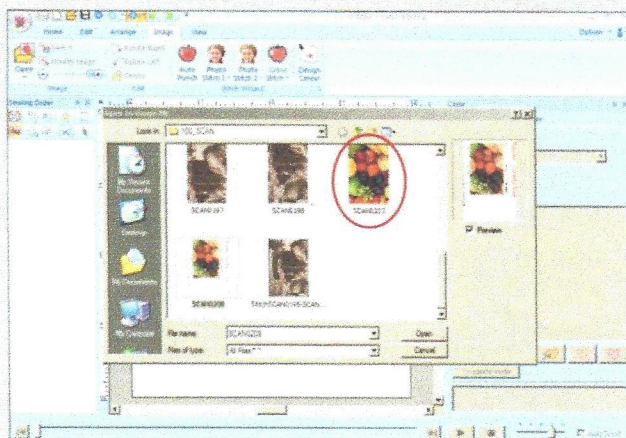
Convert your image to a .pes embroidery file – with Brother PE-DESIGN® software.

1. Open PE-DESIGN® software on your PC.
2. The 'How do you want to produce embroidery?' box may appear. If it does, click 'Cancel'.
3. Click on 'Design Settings', then click on your machine type, then select the 100x100mm hoop size (4"x4" hoop).
4. Click on the word 'Image' on the ribbon, then select 'Photo Stitch1'. In the pull down menu that automatically appears, scroll down and select 'Color'.



STEP 2 *cont'd*

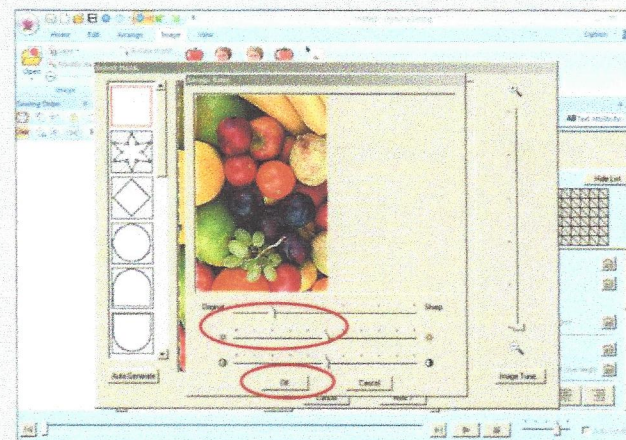
5. The 'Open an Image file' box will appear. Select the scan card, and click on your JPG file to open it.



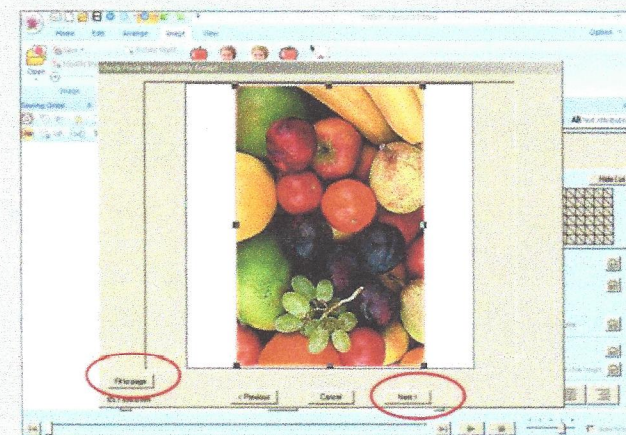
6. The 'Select Mask' box will appear. Drag the handles on the edges to fit your image. Then, click on the 'Image Tune' button.



7. Move the 'Sharp' pointer up one notch to the right, then click 'OK', then click 'Next'.

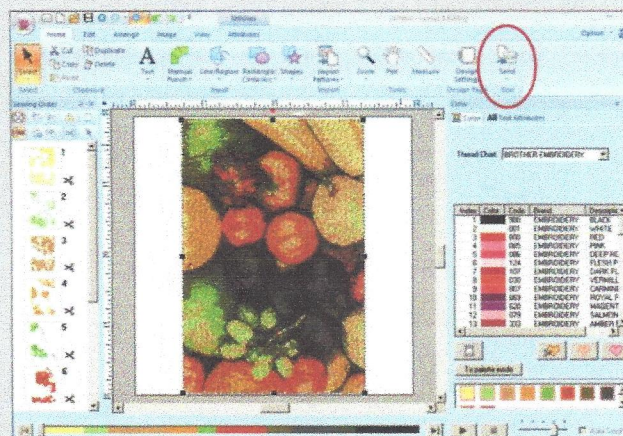
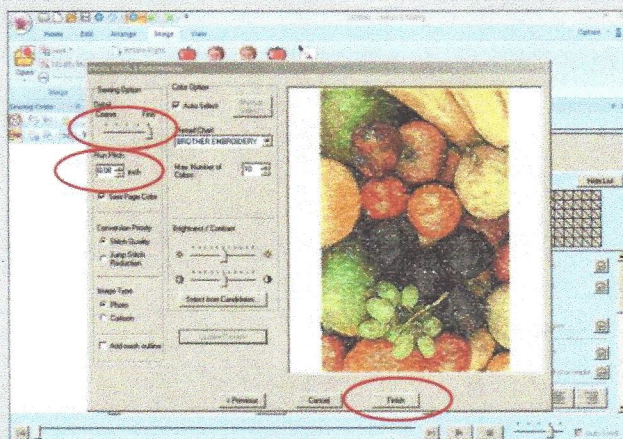


8. Click 'Fit to page' to make the image as large as the hoop size, then click 'Next'.



STEP 2 *cont'd*

9. Go to 'Detail' and move it to the right, to 'Fine'.
10. Go to 'Run Pitch' and move it down as low as possible, to .08 in (2.0mm).
11. Click 'Update Preview', then click 'Finish'.
12. Click on 'Send', and select the media you would like to send the image to – either your USB stick, embroidery card, or directly to your embroidery machine. (Only the devices you have connected to your PC will be visible.)



STEP 3

Stitch the design with your embroidery machine.

13. Depending on your 'Send' selection in the previous step – either insert the USB stick or embroidery card containing your design into the machine, or send the design by direct connect to your machine.
14. Select your design, and then stitch the design as you would any other embroidery design.